



**SOLAR
SPORT**  **LINE**



INNOVATION OF TODAY, IS ENERGY FOR TOMORROW

endurance race start

Boats that start early will be called by their number and have to start again.

If too many boats start early and we cannot see the numbers we will horn multiple times And redo the start.



Start procedure endurance

- Go to waiting area
- Pass by starting line & be acknowledged

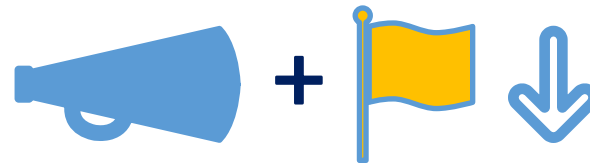
- 1 min to start =

+

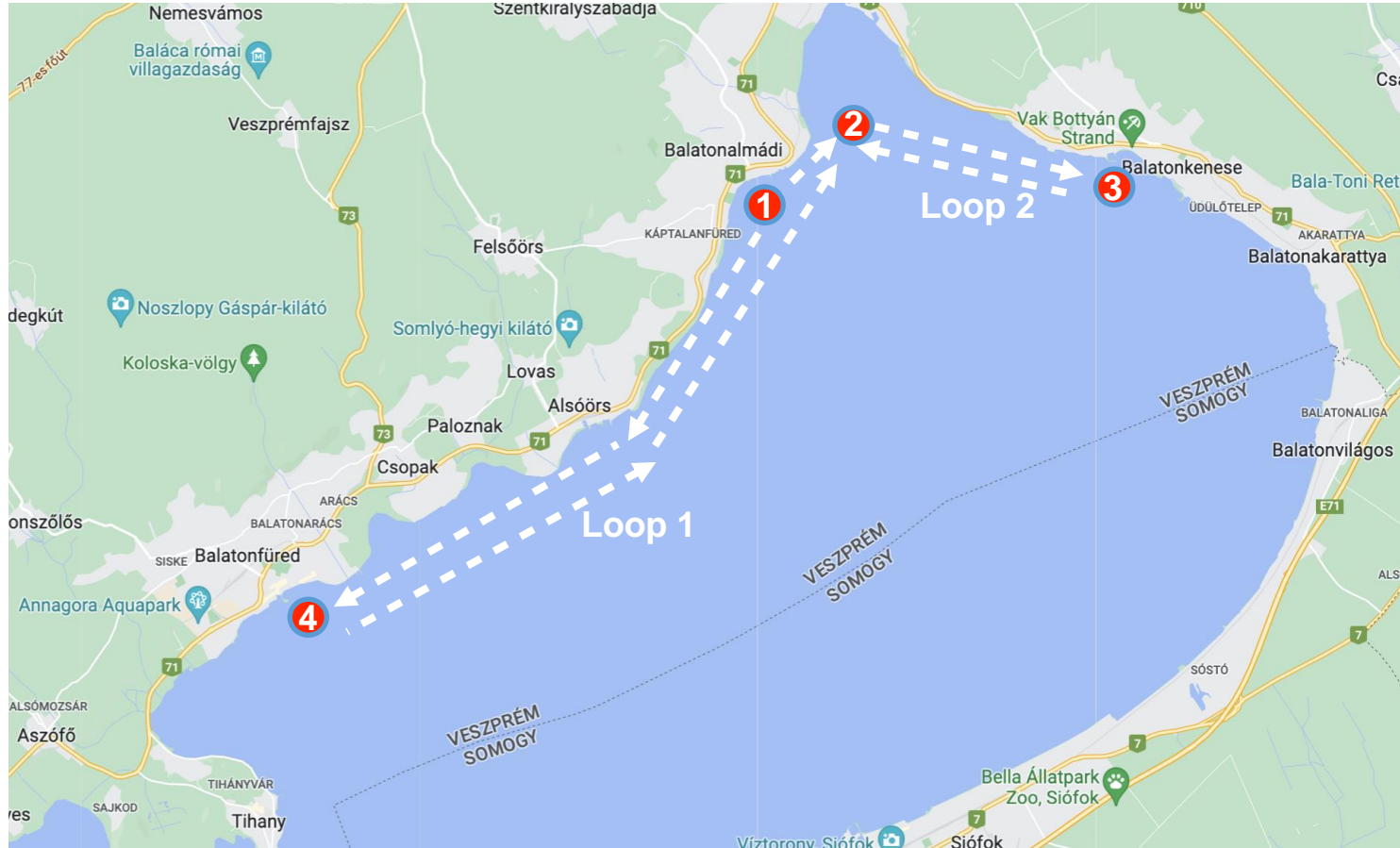
- Start =



- Finish =



Endurance



10:00

Start-2p-1p-4sb

then continuously:

Loop 1 (1sb-2p-1p-4sb)

After 12:30 a new loop 1 cannot

be started but instead you

should start loop 2:

Loop 2 (1sb-2sb-3sb-2p)

After 14:00 a new loop 2 cannot

be started but instead you

should round mark 1 starboard

and then sail to the finish

Finish closes at 15:30

During the endurance there will be a mandatory 10 min stop in front of the official tent
When you want to do this stop is up to you, but it has to be after the start and before the finish.

During the stop you can:
-change the pilot

but can't:
-do any work on your boat
-alter your boat in any way (including cooling it down with water for example)

stoptime starts the moment one of the crew on shore touches the boat and stops after the last contact between shore crew and boat



Marks

- Marks can be inflatable marks or plantoons
- Finish will be on the same position as yesterday
- The position of the platforms are:

1	47°1.535'N	18°1.309'E	Balatonalmadi, red inflatable mark
2	47°2.702'N	18°2.271'E	The middle of 3 plantoons
3	47°1.276'N	18°7.648'E	Balatonkenese, 2 plantoons: pass through it
4	46°57.361'N	17°55.008'E	Balatonfüred, single plantoon

Marks 2, 3 and 4 are plantoons

Mark 2:

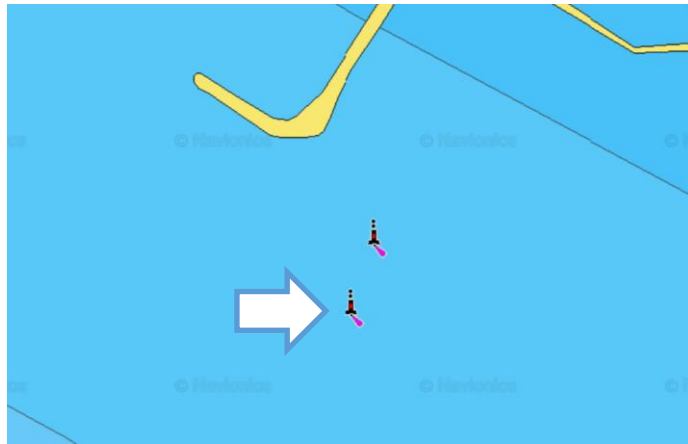


[link](#)

2	47°2.702'N	18°2.271'E
---	------------	------------



Mark 3:

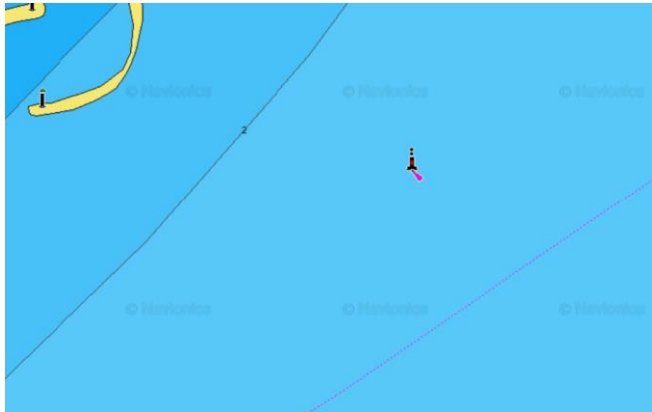


[link](#)

3	47°1.276'N	18°7.648'E
---	------------	------------



Mark 4:



[link](#)

4	46°57.361'N	17°55.008'E
---	-------------	-------------





Speedrace:

Every team gets 2 successful* attempts.
*Successful means that we were able to lock on your boat and measure a speed.
The fastest speed counts.
Start at the red mark and sail directly to the end of the pier.

Attempts can be started from 16:00 onwards
We will not start after 17:00.
when you want to start an attempt just let the race officer know and he will give you the ok to start your attempt.



ENJOY