



**SOLAR
SPORT**  **LINE**



INNOVATION OF TODAY, IS ENERGY FOR TOMORROW

Safety first!

Pilots:

- stay hydrated & cool, use sunscreen
- use tested life jacket
- keep your boat dry
- stay all times within 500 mtr radius from shoreline.

Captains:

- when in doubt, ask!
- While teammate on water be present in jury tent and connect to whatsapp group

Jury tent

- Join whatsapp group “SSO Hungary”
- 1 teammember in contact with pilot at all times when boat afloat
- Location: in tent at peer at event area

Slibway rules:

- Be in time to go and get into water. There will be a line.
- No time to do alternations at slipway before racing.

Date	Start	Race element	Finish	Start procedure	Finish procedure
24 aug	10:00	Time trail	14:30	Le Mans	Mark 1- finish
	16:00	Slalom race	17:00	C	Finish
25 aug	10:00	Endurance	15:00	A	Mark 1- finish
	16:00	Top speed	17:00	B	Finish
26 aug	10:00	Ton's Race	13:00	A	Mark 1- finish
	14:00	Matchrace	16:00	C	Finish
	19:30	Parade	21:00	A	Finish

Racenr	Teamname
O02	Dutch Solar Boat
O03	Engineers of innovation
O05	HVHL Adres Zonnebootteam
O07	Spectrum Solar Team
O11	AGH University
O14	Whisper Power Solar Team
O15	Team Emden
O16	BME Solarboat Team
O17	Solar team Sneek
O18	Pannon Solar Boat Team

Time Trial Le Mans start 1 heat

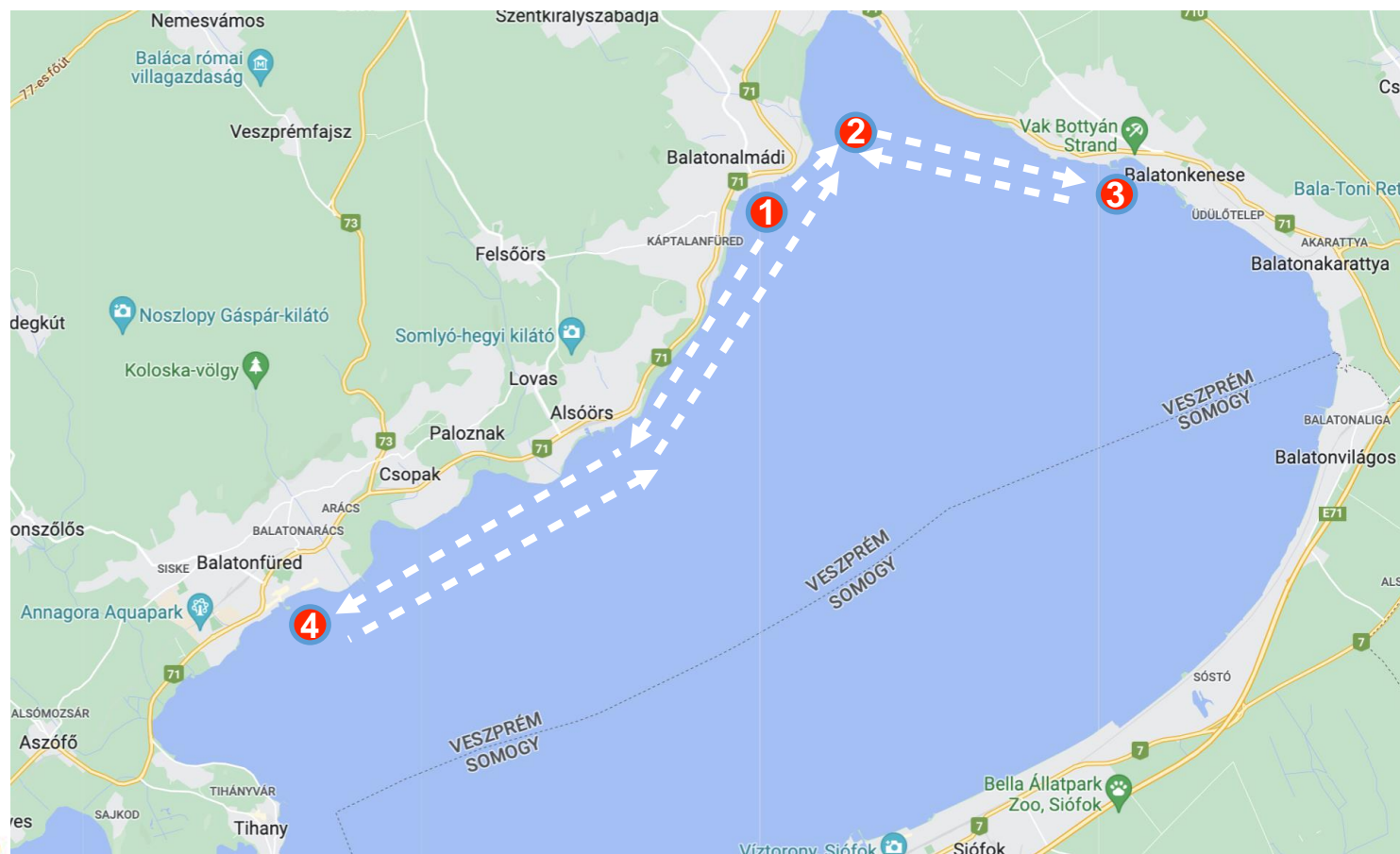


startpositions



team	startposition
O02	10
O03	1
O05	2
O07	4
O11	7
O14	8
O15	6
O16	5
O17	3
O18	9

Time trail (approx. 40 km)



Course

Start

start mark port

1 port

2 starboard

3 starboard

2 port

4 starboard

2 starboard

3 starboard

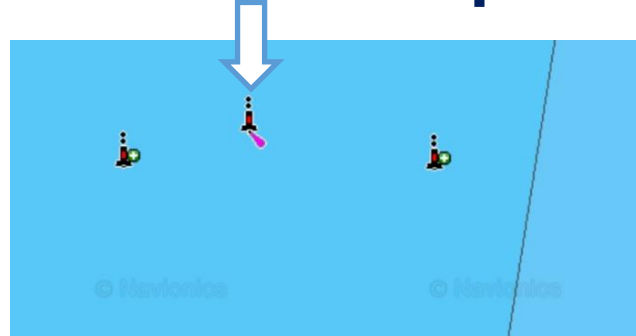
2 port

1 starboard

Finish

Marks 2, 3 and 4 are plantoons

Mark 2:

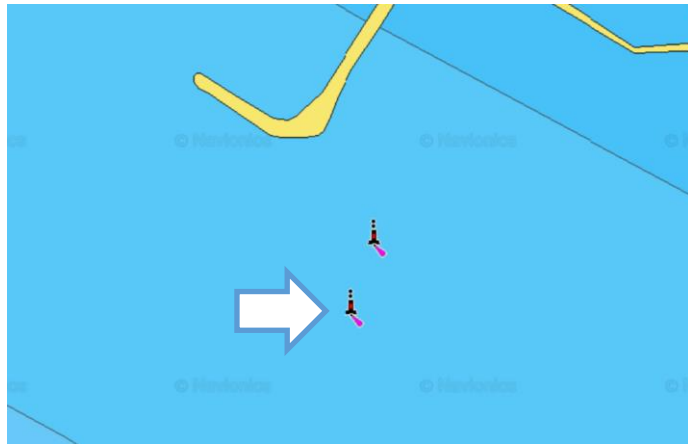


[link](#)

2	47°2.702'N	18°2.271'E
---	------------	------------



Mark 3:

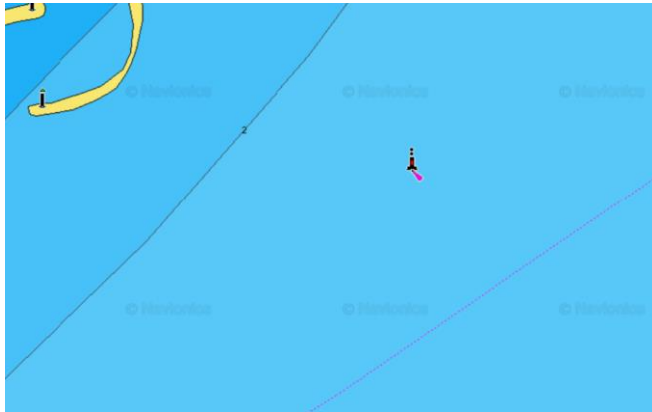


[link](#)

3	47°1.276'N	18°7.648'E
---	------------	------------



Mark 4:



[link](#)

4	46°57.361'N	17°55.008'E
---	-------------	-------------










Marks

- Marks can be inflatable marks or plantoons
- Finish will be in between mark 1 and the starting mark
- The position of the platforms are:

1	47°1.535'N	18°1.309'E	Balatonalmadi, red inflatable mark
2	47°2.702'N	18°2.271'E	The middle of 3 plantoons
3	47°1.276'N	18°7.648'E	Balatonkenese, 2 plantoons: pass through it
4	46°57.361'N	17°55.008'E	Balatonfüred, single plantoon

Start procedure slalom:

- Go to waiting area
- Pass by starting line & be acknowledged
- 1 min to start =  +  
- Start =  +  
- Finish = 
- When one or both of the boats are early multiple horns will sound and we will redo the start, the boat that was early will get 3 seconds added to it's time

Slalom Race

- total distance 2x 180 mtr
- Two courses aprox. 50 mtr apart



Slalom Race

Course A	Course B
Start	Start
1 port	5 port
2 starboard	6 starboard
3 port	7 port
4 starboard	8 starboard
3 port	7 port
2 starboard	6 starboard
1 port	5 port
Finish	Finish

- Start schedule on next slide
- 2 teams start simultaneously
- Each team does course a and course b
- Total time of course A and B will be your result

Slalom Race schedule

race number	Course A	Course B
1	O02	O14
2	O03	O15
3	O05	O16
4	O07	O17
5	O11	O18
6	O14	O02
7	O15	O03
8	O16	O05
9	O17	O07
10	O18	O11

Extra info:

- Official communication whatsapp group!
- Race will be covered through Estella, so download the app!

- Race officer:
DJ Korpershoek +31 6 20344868
- Coordinator jury tent:
Joris Melkert +31 6 49 63 44 41
- Emergency: 112



ENJOY

Questions?